

Freedom™

From Ford and Allied Mobility

Freedom™ from Ford and Allied Mobility



Allied Mobility™
Driving for Perfection



 **Motability**
The leading car scheme for disabled people



Ramp pulls out from vehicle floor



Easy-use electric winch



Manual or automatic



Unique EasyGlide™ ramp

Discover Freedom



The Ford Freedom™, available exclusively from Allied Mobility, marks a fabulous addition to the UK's best-selling range of wheelchair accessible vehicles (WAVs).

If you like Ford, you'll love Freedom™. This stylish car combines ultra-modern comfort with the latest in fuel efficient, environmentally friendly performance. Most importantly Freedom™ brings you superb usability for wheelchair users, with the unique new EasyGlide™ access ramp.

Freedom™ owners also benefit from the option of manual or automatic transmission, plenty of luggage space and full original Ford seating, allowing you to create the ideal vehicle to meet you and your family's needs.

Access & Safety



Unique pull-out ramp

With *Freedom™* comes the ultimate in safe, secure and user-friendly wheelchair travel.

The *Freedom™* comes with an innovative new wheelchair ramp. The *EasyGlide™* feature simply pulls-out from the rear floor of the vehicle to become an ultra-strong, low-gradient ramp. It can then be folded upwards behind a wheelchair passenger or folded back

into the boot floor, whenever your car is not being used with a wheelchair user.

Once inside, the wheelchair is secured by high-quality front and rear restraints, while lap and diagonal seat belts ensure optimum security for wheelchair users. *Freedom™* is also tested and certified to meet the highest automotive and accessibility standards.

Life Balance



Ford has an enviable track record as the UK's leading car brand. Based on the acclaimed Ford Tourneo Grand Connect, *Freedom*[™] is as easy to drive as it is on the eye. Ford's most versatile vehicle, Connect is also the first car in its segment to achieve a maximum five-star safety rating from Euro NCAP. It's easy to understand why with electronic stability control, emergency break assist and a host of protective airbags.

Ford *Freedom*[™] is a comfortable place to be and a superb all-round vehicle for personal and family use. It can offer a standard car one minute and then full wheelchair access the next. Electronic power-assisted steering and the large front windscreen make driving round town a breeze. Inside awaits an abundance of comfort features, from easily adjusted heating and air conditioning to the latest digital audio and mobile connectivity.

Accessibility



Freedom™ is designed around wheelchair users and their carers. It combines superb wheelchair access and safety for a wheelchair user with space and comfort for up to five seated passengers.

Wheelchair Access Features:

- Lowered floor for optimum accessibility
- Lightweight EasyGlide™ pull-out ramp
- Optional assist winch
- Easy-clean surfaces
- High quality wheelchair restraint system certified to include heavier wheelchairs and powerchairs
- Easy-on lap and diagonal seatbelt
- Fully compliant with UK wheelchair accessible vehicle standard – PAS 2012

Help & Advice



Allied Mobility is Europe's leading wheelchair accessible vehicle manufacturer. With thousands of satisfied customers, our goal is finding the best solution to meet your particular needs. Based locally throughout the UK, our dedicated mobility consultants are there to provide you with a home demonstration of the vehicle(s) of your choice, wherever you live. As well as answering any questions about the car, they can advise on vehicle finance and guide you through any Motability paperwork.

Should you have any queries before or after ordering your wheelchair accessible vehicle, contact our mobility advisors at any time for expert advice and information. When the day comes to receive your new *Freedom*™ we'll bring it right to your door, together with a personal handover and helpful user guide. Our unique Allied Aftercare™ support also includes a four-week follow-up check and annual safety inspections*. You'll also have access to our seven-day helpline and a nationwide network of more than 600 Ford dealers.

*See www.alliedmobility.com/allied-aftercare for more information.

Key Benefits



Standard *Freedom*[™] Features Include:

- Original Ford seating throughout
- Air conditioning
- DAB radio with Bluetooth[™] and voice control system
- USB/iPod connectivity
- Electric windows (driver's one-touch)
- Front, side and curtain airbags
- Rear tailgate with high brake light

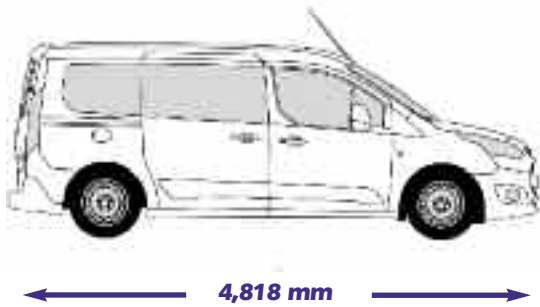
Freedom[™] Options Include:

- 5-speed manual or 6-speed automatic transmission
- Attractive metallic colours
- A range of driving aids and additional storage solutions

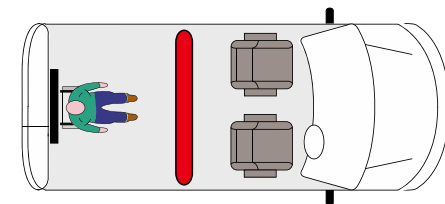
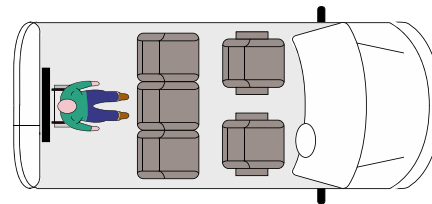
Seating Choice




Length



Seating Layouts



 Tilted forward centre seats

Technical Specification

Model	1.5 Duratorq Manual	1.5 Duratorq Powershift Auto*
Engine		
Emission control standard	Euro 6	Euro 6
Cubic capacity	1,498	1,498
Zetec - Max. power - PS	100	100
Zetec - Max. torque - Nm	250	270
Titanium - Max. power - PS	100	120
Titanium - Max. torque - Nm	250	300
Fuel	Diesel	Diesel
Start & Stop technology	x	✓
Transmission		
Number of gears	5 manual	6 auto
Fuel Consumption (mpg)		
Urban drive cycle	52.3	52.3
Extra urban drive cycle	64.2	60.1
Combined drive cycle	58.9	56.6
Weight (Kg)		
Gross vehicle weight	2,315	2,315
Kerb weight	1,756	1,756
Tyres		
Size	205/60 R16	
Puncture system	Ford puncture repair kit	
Brakes		
Front & rear discs	Power assisted	
Suspension		
Front	McPherson struts & coils springs	
Rear	Coil springs & torsion bar	

* Direct shift gearbox for smoother gear changes with no clutch action required.

Certification	
Base Vehicle	Ford Tourneo Grand Connect
Vehicle Approval	EC Whole Vehicle Type Approval
Access Approval	Approved to PAS 2012 for M1 wheelchair accessible vehicles

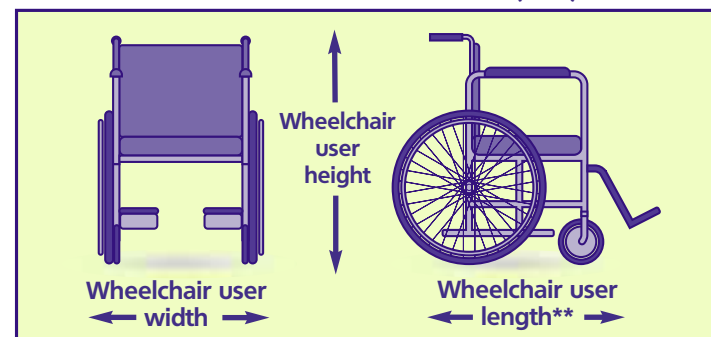
Vehicle Dimensions (mm)	
Length	4,418
Width (mirrors folded)	1,966
Height	1,852
Side door entry width	612

Access Ramp	
Width x length (mm)	785 x 1070
Angle when deployed on to road (°)	15.4
Safe working load (kg)	400
Winch (where fitted)	
Safe working load (kg) [†]	319

[†] When ramp is deployed at 14° angle.

Wheelchair Restraints	
Maximum certified weight (kg)	200

Maximum Wheelchair User Dimensions (mm)*



Wheelchair user height	1,411
Wheelchair user width	767
Wheelchair user length**	970

*At the designated wheelchair position.

**933mm with second row seats upright in Grand Freedom RS model.

Features & Accessories

Style Features	Zetec	Titanium
Twin sliding doors	✓	✓
One piece tailgate	✓	✓
Body coloured front bumper	✓	✓
Metallic paint	F	F
Safety & Security		
ABS, EBA & ESC	✓	✓
Tyre pressure monitoring	✓	✓
Full front and rear airbags	✓	✓
Front and rear fog lights	✓	✓
Three-point seat belts (including wheelchair passenger)	✓	✓
Four-point wheelchair restraint system (85kg)	✓	✓
Four-point wheelchair restraint system (200kg)	•	•
Remote controlled electric winch	F	F
Reverse parking sensors	F	✓
Day running lights	✓	✓
Comfort & Convenience		
Air conditioning	✓	✓
Alloy wheels	•	✓
Quickclear heated windscreen	✓	✓
Electrically adjustable and heated door mirrors	✓	✓
Electrically operated windows	✓	✓
Reach adjustable steering wheel	✓	✓
Height adjustable driver's seat	✓	✓
Driver seat armrest	X	✓
Full original passenger seating with folding rear seats	✓	✓
Front floor carpet mats	✓	✓
Cruise control with speedlimiter	X	✓
Various hand controls and adaptations	•	•
Privacy glass	F	✓
Panorama roof	X	✓
Audio		
DAB radio & MP3 compatible CD player	✓	✓
Bluetooth® connectivity & voice control	✓	✓

Colours

Metallic



Shadow Black



Moondust Silver

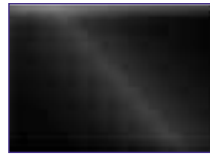


Metallicious Silver

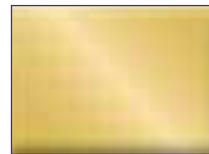


Deep Impact Blue

Solid



Magnetic



Solar



Frozen White

Colour palette for illustrative purposes only. Motability Scheme vehicles are available in metallic colours only.

KEY ✓ Standard • Optional F Free option X Not available

For further help or to arrange a free home demonstration, call or email our mobility advisors or visit our website.

Freephone 0800 587 9677

Email info@alliedmobility.com

Visit www.alliedmobility.com

